



**SAI KRISH PAINTS**

EXPRESS PAINTING SERVICES, CONTRACTING MANAGEMENT

**GSTIN-33BBOPP0421N1ZI**



No.06, Singh Transport Complex, Narimedu, Madurai-16, Tamilnadu, India.



## About Us

Every tree was a seed once. We were a seed at 2009. Now we are growing with the support of our customers. As we grow more bigger and bigger, we wish to be a fruit bearing tree, that is not just beneficial to us, but to hundreds of workers who travel with us.

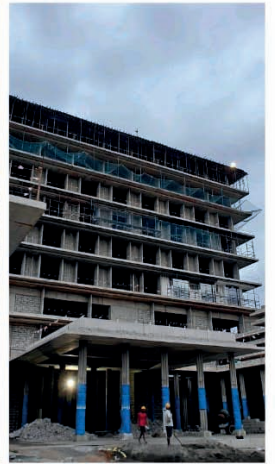
Sai Krish Associates is a brand of course, but a brand that has the benevolence of a family. Growth with sustainability is our motto. Perfection and Customer satisfaction is our ethics. As we step into successful 15th year with these values, we seek the blessings of well-wishers and support of the esteemed customers.

we have built a reputation for delivering exceptional results that exceed our clients' expectations. We believe that every painting project is unique, and we take the time to understand our clients' needs and preferences to ensure that we deliver a finished product that reflects their vision.



Director **Rajesh.P** Sai Krish Group - India  
Al Sai Group - Bahrain  
HP : +91 79047 49170

**HP : +91 79047 49170 | +91 90807 63086 | +91 90472 80160**



**WOW**  
**ARCHITECTS**  
**Singapore**

SINGAPORE

**Architect - Warner Wong Design's**

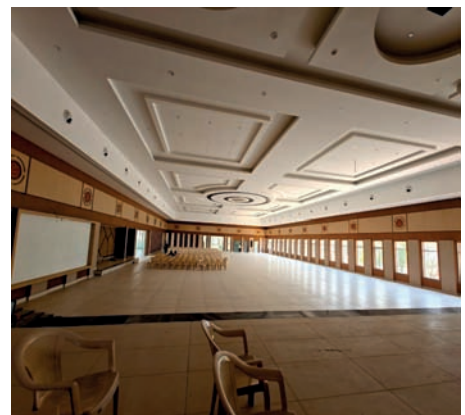




**Dhina Malar Groups**  
**Architect - Aniruth**  
**Chennai**

DHINA MALAR  
GROUPS





**Brindhavan Palace**  
**Luxurious Wedding Hall**  
**Architect - Srinivasan**  
**Palani**

Brindhavan  
 Palace





**Dhanalakshmi Srinivasan Medical College  
Perambalur**

**Architect - Karunakaran**





OLOGY  
TECH CAMPUS

**Velammal School**  
**LOGY TECH CAMPUS**  
**Chennai**





**Vignesh & Co**  
**Architect - Ajaz Naveen**  
**Nagercoil**





# MILESTONE ARCHITECTURE

Architect  
**SOOSAI ARUL**

Architect  
**SIVAKUMAR**

**Bangalore & Madurai**





**JOTUN**  
No. 1 in Quality Paints



Mr. Palanivelrajan Site

PROPOSAL 1

All the colours reproduced are shown as close to actual colours as modern printing techniques allow. Where the colour matching is critical an applied sample is recommended.

30/03/2024



# V.V.I.P Villa - Madurai





**SAKTHI  
SUGARS**  
Coimbatore



SAKTHI SUGARS





**Arch 4 Foundation**  
**Architect - Vijay**  
**Coimbatore**

ARCH 4  
 FOUNDATION



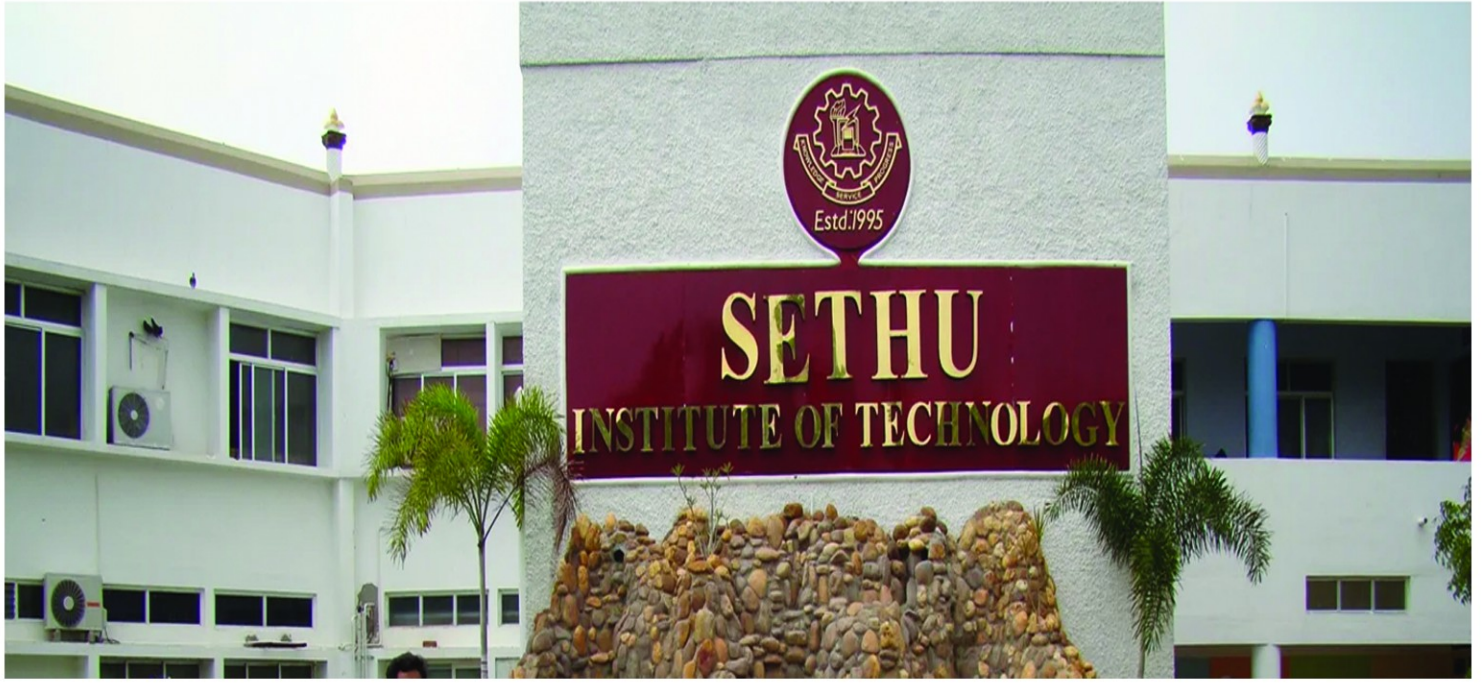


**ER. RAJKUMAR**  
**SKR CONSTRUCTION**  
**Madurai**

**MILESTONE**  
**ARCHITECTURE**  
**Bangalore & Madurai**







# SETHU

**INSTITUTE OF TECHNOLOGY**  
VIRUDHUNAGAR DISTRICT





# MAHATMA GLOBAL GATEWAY CAMBRIDGE INTERNATIONAL SCHOOLS Madurai







**SUN INFRAA**

**TRENDS PVT LTD**

**Virudhunagar & Chennai**

**Architect- HARIHARA SUDHAN**

**Chennai**





## VISHAAL - VIRINCHI MADURAI



**Architect- VENKATRAMAN**  
**Chennai**



**VISHAAL - VALLI MADURAI**





## TWIN VILLAS - SRIVILLIPUTHUR



**Architect- ARUN**  
**Coimbatore**





## SAS HOTEL PROJECT - MALDIVES





**BOGA MAGIC WALL PLAST**

No.06, Singh Transport Complex,  
Narimedu, Madurai-16, Tamilnadu, India.  
Contact: 9080763086, 9047280160  
Web: [www.sai Krishpaints.com](http://www.sai Krishpaints.com)

**NEED ONLY ONE COAT WALL PUTTY  
CRACK - FREE SMOOTH FINISH**

**Gypsum Plaster**

★★★★★ Authorised Distributor  
★★★★★ Brand Applicator

**gyproc**  
SAINT-GOBAIN

**SAINT-GOBAIN**



### Application Areas

- BRICKS
- BLOCKS
- CONCRETE





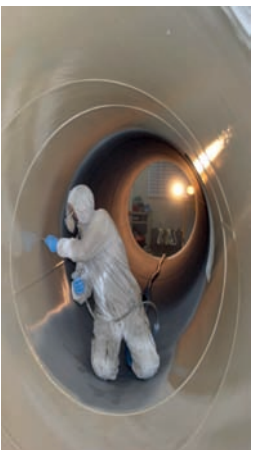
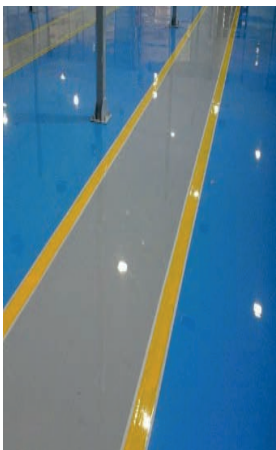
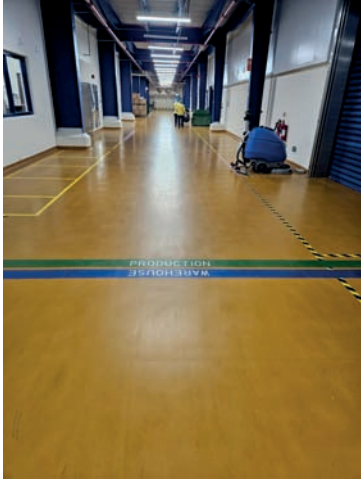






# مجموعة الساعي

AL SAI GROUP



BLDG -646, FLAT- 401, ROAD-3517  
BLOCK- 335, BLD NAME- DIAMOND 1, Bahrain

Call us : +91 79047 49170 | Bahrain : +973 36293135



# OUR ESTEEMED CLIENTS











# **SK GROUP OF COMPANIES**

- \* SAI KRISH ASSOCIATES. Madurai**
- \* SAI KRISH PAINTS. Madurai**
- \* SAI KRISH HAPPY TAX. Madurai**
- \* SK BOGA MAGIC WALL PLAST. Madurai**
- \* AL SAI GROUP. مجموعة الساعي . Bahrain**

**No.06, Sign Transport Complex, Narimedu, Madurai -16.  
Tamilnadu, India.**

**Contact: 7904749170, 9080763086, 9047280160**

**Web : [www.saikrishpaints.com](http://www.saikrishpaints.com)**